

Gold Mountain Limited  
(ASX:GMN)

December 2018

## WHO IS IIR?

Independent Investment Research, "IIR", is an independent investment research house based in Australia and the United States. IIR specialises in the analysis of high quality commissioned research for Brokers, Family Offices and Fund Managers. IIR distributes its research in Asia, United States and the Americas. IIR does not participate in any corporate or capital raising activity and therefore it does not have any inherent bias that may result from research that is linked to any corporate/ capital raising activity.

IIR was established in 2004 under Aegis Equities Research Group of companies to provide investment research to a select group of retail and wholesale clients. Since March 2010, IIR (the Aegis Equities business was sold to Morningstar) has operated independently from Aegis by former Aegis senior executives/shareholders to provide clients with unparalleled research that covers listed and unlisted managed investments, listed companies, structured products, and IPOs.

IIR takes great pride in the quality and independence of our analysis, underpinned by high caliber staff and a transparent, proven and rigorous research methodology.

### INDEPENDENCE OF RESEARCH ANALYSTS

Research analysts are not directly supervised by personnel from other areas of the Firm whose interests or functions may conflict with those of the research analysts. The evaluation and appraisal of research analysts for purposes of career advancement, remuneration and promotion is structured so that non-research personnel do not exert inappropriate influence over analysts.

Supervision and reporting lines: Analysts who publish research reports are supervised by, and report to, Research Management. Research analysts do not report to, and are not supervised by, any sales personnel nor do they have dealings with Sales personnel

Evaluation and remuneration: The remuneration of research analysts is determined on the basis of a number of factors, including quality, accuracy and value of research, productivity, experience, individual reputation, and evaluations by investor clients.

### INDEPENDENCE – ACTIVITIES OF ANALYSTS

IIR restricts research analysts from performing roles that could prejudice, or appear to prejudice, the independence of their research.

Pitches: Research analysts are not permitted to participate in sales pitches for corporate mandates on behalf of a Broker and are not permitted to prepare or review materials for those pitches. Pitch materials by investor clients may not contain the promise of research coverage by IIR.

No promotion of issuers' transactions: Research analysts may not be involved in promotional or marketing activities of an issuer of a relevant investment that would reasonably be construed as representing the issuer. For this reason, analysts are not permitted to attend "road show" presentations by issuers that are corporate clients of the Firm relating to offerings of securities or any other investment banking transaction from that our clients may undertake from time to time. Analysts may, however, observe road shows remotely, without asking questions, by video link or telephone in order to help ensure that they have access to the same information as their investor clients.

Widely-attended conferences: Analysts are permitted to attend and speak at widely-attended conferences at which our firm has been invited to present our views. These widely-attended conferences may include investor presentations by corporate clients of the Firm.

Other permitted activities: Analysts may be consulted by Firm sales personnel on matters such as market and industry trends, conditions and developments and the structuring, pricing and expected market reception of securities offerings or other market operations. Analysts may also carry out preliminary due diligence and vetting of issuers that may be prospective research clients of ours.

### INDUCEMENTS AND INAPPROPRIATE INFLUENCES

IIR prohibits research analysts from soliciting or receiving any inducement in respect of their publication of research and restricts certain communications between research analysts and personnel from other business areas within the Firm including management, which might be perceived to result in inappropriate influence on analysts' views.

Remuneration and other benefits: IIR procedures prohibit analysts from accepting any remuneration or other benefit from an issuer or any other party in respect of the publication of research and from offering or accepting any inducement (including the selective disclosure by an issuer of material information not generally available) for the publication of favourable research. These restrictions do not preclude the acceptance of reasonable hospitality in accordance with the Firm's general policies on entertainment, gifts and corporate hospitality.

### DISCLAIMER

This publication has been prepared by Independent Investment Research (Aust) Pty Limited trading as Independent Investment Research ("IIR") (ABN 11 152 172 079), an corporate authorised representative of Australian Financial Services Licensee (AFSL no. 410381). IIR has been commissioned to prepare this independent research report (the "Report") and will receive fees for its preparation. Each company specified in the Report (the "Participants") has provided IIR with information about its current activities. While the information contained in this publication has been prepared with all reasonable care from sources that IIR believes are reliable, no responsibility or liability is accepted by IIR for any errors, omissions or misstatements however caused. In the event that updated or additional information is issued by the "Participants", subsequent to this publication, IIR is under no obligation to provide further research unless commissioned to do so. Any opinions, forecasts or recommendations reflects the judgment and assumptions of IIR as at the date of publication and may change without notice. IIR and each Participant in the Report, their officers, agents and employees exclude all liability whatsoever, in negligence or otherwise, for any loss or damage relating to this document to the full extent permitted by law. This publication is not and should not be construed as, an offer to sell or the solicitation of an offer to purchase or subscribe for any investment. Any opinion contained in the Report is unsolicited general information only. Neither IIR nor the Participants are aware that any recipient intends to rely on this Report or of the manner in which a recipient intends to use it. In preparing our information, it is not possible to take into consideration the investment objectives, financial situation or particular needs of any individual recipient. Investors should obtain individual financial advice from their investment advisor to determine whether opinions or recommendations (if any) contained in this publication are appropriate to their investment objectives, financial situation or particular needs before acting on such opinions or recommendations. This report is intended for the residents of Australia. It is not intended for any person(s) who is resident of any other country. This document does not constitute an offer of services in jurisdictions where IIR or its affiliates do not have the necessary licenses. IIR and/or the Participant, their officers, employees or its related bodies corporate may, from time to time hold positions in any securities included in this Report and may buy or sell such securities or engage in other transactions involving such securities. IIR and the Participant, their directors and associates declare that from time to time they may hold interests in and/or earn brokerage, fees or other benefits from the securities mentioned in this publication.

IIR, its officers, employees and its related bodies corporate have not and will not receive, whether directly or indirectly, any commission, fee, benefit or advantage, whether pecuniary or otherwise in connection with making any statements and/or recommendation (if any), contained in this Report. IIR discloses that from time to time it or its officers, employees and related bodies corporate may have an interest in the securities, directly or indirectly, which are the subject of these statements and/or recommendations (if any) and may buy or sell securities in the companies mentioned in this publication; may affect transactions which may not be consistent with the statements and/or recommendations (if any) in this publication; may have directorships in the companies mentioned in this publication; and/or may perform paid services for the companies that are the subject of such statements and/or recommendations (if any).

However, under no circumstances has IIR been influenced, either directly or indirectly, in making any statements and/or recommendations (if any) contained in this Report. The information contained in this publication must be read in conjunction with the Legal Notice that can be located at <http://www.independentresearch.com.au/Public/Disclaimer.aspx>.

### THIS IS A COMMISSIONED RESEARCH REPORT.

The research process includes the following protocols to ensure independence is maintained at all times:

- 1) The research process has complete editorial independence from the company and this included in the contract with the company;
- 2) Our analyst has independence from the firm's management, as in, management/ sales team cannot influence the research in any way;
- 3) Our research does not provide a recommendation, in that, we do not provide a "Buy, Sell or Hold" on any stocks. This is left to the Adviser who knows their client and the individual portfolio of the client.
- 4) Our research process for valuation is usually more conservative than what is adopted in Broking firms in general sense. Our firm has a conservative bias on assumptions provided by management as compared to Broking firms.
- 5) All research mandates are settled upfront so as to remove any influence on ultimate report conclusion;
- 6) All staff are not allowed to trade in any stock or accept stock options before, during and after (for a period of 6 weeks) the research process.

For more information regarding our services please refer to our website [www.independentresearch.com.au](http://www.independentresearch.com.au).

# Contents

Finding Elephants ..... 1

Key Points ..... 1

Activities Update ..... 2

    Overview ..... 2

    Geology and Previous Work by Gold Mountain ..... 3

    Current Exploration Activities ..... 3

    Corporate ..... 8

    Planned Activities ..... 8

Risks ..... 9

**Note:** This report is based on information provided by the company as at December 11, 2018

### Investment Profile

Share Price - December 10, 2018	A\$0.082
Ordinary Shares	515.1 m
Unlisted Options (Includes ESOP Options)	85.8 m
Fully Diluted	601.0 m
Market Capitalisation	A\$42.2m
12 month L/H	A\$0.073/\$0.165
Cash as at 30 September, 2018	A\$1.36 m

### Board and Management

Mr Graham Kavanagh: Non-Executive Director and Chairman

Mr Tony Teng: Managing Director

Douglas Smith: Exploration and In-Country Operations Director

Mr Eric Kam: Company Secretary

### Major Shareholders

Citicorp Nominees	6.60%
HSBC Custody Nominees	6.08%
PAY Chuan Lim	3.88%
Top 20	45.96%
Board and Management	1.83%

### Share Price Performance



Senior Analyst – Mark Gordon

The investment opinion in this report is current as at the date of publication. Investors and advisers should be aware that over time the circumstances of the issuer and/or product may change which may affect our investment opinion.

## FINDING ELEPHANTS

Since our September 2017 update, Gold Mountain Limited ("Gold Mountain" or "the Company") has made significant progress on its 2,279 km<sup>2</sup> Wabag Project ("Wabag" or "the Project") in the Central Highlands of Papua New Guinea.

In our view the most significant event has been the recent discovery of the Mongae Creek porphyry copper prospect, with the second of two holes drilled to date intersecting up to 55m @ 0.11% Cu amongst others in what appears to be a very large system; the hole also displayed typical porphyry style veining, alteration and mineralisation. The potential of this discovery cannot be understated - although the tenor of mineralisation of holes drilled to date is sub-economic, they provide a vector to higher grade mineralisation; porphyry systems can be very large and commonly the tenor of mineralisation is gradational from the margins to centre of the system.

**Significantly Mongae Creek is just one of three porphyry prospects identified to date** that occur along an interpreted 7km long NW trending structural zone - the others are the as yet undrilled K-Lam and Sak Creek prospects, both of which have returned strongly anomalous results from surface geochemical sampling.

Given the results, these will be the focus of the Company's activities going forward, however that does not mean that Crown Ridge will be forgotten. Gold Mountain has shelved plans for palaeo-placer gold production from Crown Ridge, however the results of work completed to date (including drilling) have highlighted the potential for the prospect to host hard rock epithermal gold mineralisation, as partly evidenced by the recovery of significant amounts of gold/quartz pebbles from the headwaters of creeks draining the Crown Ridge area.

The Company has a comprehensive exploration programme planned over the next two years - this is planned to test all key targets, will include appreciable drilling and will result in steady news flow.

## KEY POINTS

**Hunting in elephant country:** PNG is the host to a number of world class porphyry and porphyry related copper and/or gold systems, including, close to Wabag, Ok Tedi, Frieda River and Porgera, and is amongst the most well endowed and prospective gold regions globally.

**The right geological setting:** Wabag is located over the fertile Maramuni Arc and on a NE trending structure, which are both considered key geologic elements in localising a number of the major mineral systems in the highlands of PNG.

**Virtually unexplored tenement:** Despite the location in a world class mineralised province the Project was virtually unexplored prior to Gold Mountain's activities (even though the area was previously held by a major) - this highlights the potential for further discoveries in addition to Crown Ridge and the three porphyry prospects.

**Emphasis on community relations:** The Company has stated that it enjoys good community relations with the local villages, with this supported by there being positive and encouraging responses at a recent Warden's hearing relating to the renewal of the Company's ELs - community relations are a key consideration when operating in PNG.

**Good infrastructure:** The main base camp at Crown Ridge is accessible by track from the sealed Highlands Highway, and just 75km from Mt Hagen and 30km from the airport at Wapenamanda. Helicopter access is still required for the porphyry targets of Mongae Creek, Sak Creek and K-Lam, however these are all within 20km of the base camp.

**Strong technical team:** The Company has a strong technical team with extensive experience in PNG and on the styles of mineralisation being sought.

**Porphyries - proven company makers:** A major porphyry discovery can be a company maker. A case in point, and a possible analogy to Gold Mountain (should a major discovery be made) is SolGold (LSE:SOLG, TSX:SOLG), with the discovery and evaluation of their Cascabel project in Ecuador, with the Alpala deposit having total Resources of 2.95 Bt @ 0.37% Cu and 0.24 g/t Au. This includes Indicated Resources of 2,050 Bt @ 0.41% Cu and 0.27 g/t Au. Total contained metal is 23.9 Mlbs Cu and 22.9 Moz Au, comparable to the major PNG deposits.

On the back of the discovery and subsequent Resource expansions SolGold has reached a current market capitalisation of ~A\$1.24 billion, with the share price on the LSE rising from 2p in early 2016 to an initial peak of 47p in mid-2017, and is currently trading at 38p.

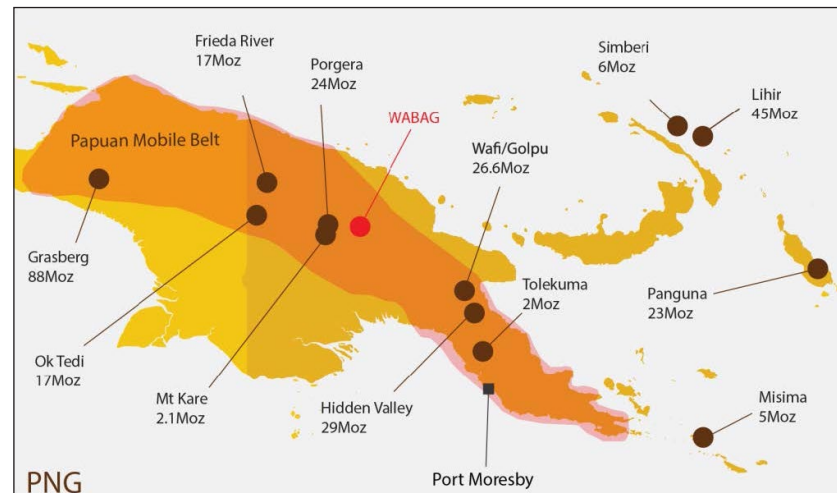
We would expect to see a significant uplift in the share price and market capitalisation of the Company with a major discovery at Wabag.

## ACTIVITIES UPDATE

### OVERVIEW

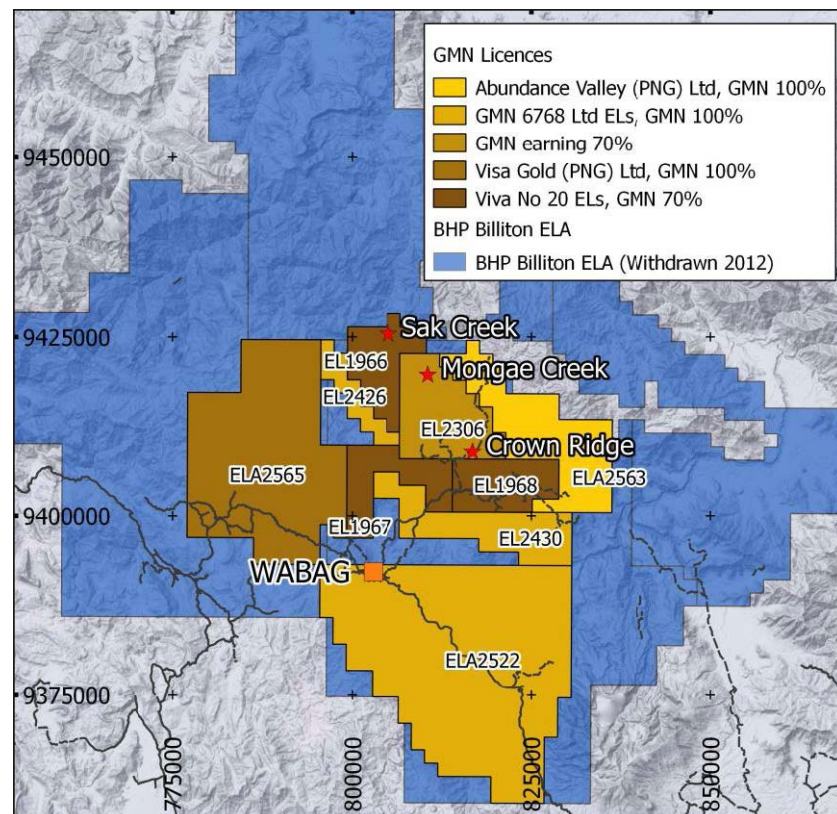
- ◆ Subsequent to our September 2017 update note, activities were initially concentrated on Crown Ridge and then the new porphyry discoveries at Mongae Creek and K-Lam - the Mongae Creek discovery has led to this now being the focus of activities, with plans to mine paleo-placer gold at Crown Ridge being shelved, however with exploration for hard-rock epithermal gold mineralisation to continue at this highly prospective target.
- ◆ Wabag comprises six granted exploration licences ("EL") and three exploration licence application ("ELA"), covering 2,275km<sup>2</sup>, located some 75km ENE of Porgera in the Highlands of New Guinea (Figures 1 and 2).

**Figure 1: Wabag Project location**



Source: Gold Mountain

**Figure 2: Wabag tenement map and details**



Source: Gold Mountain

- ◆ Subsequent to our previous update, the Company has lodged applications ELA2563 (Abundance Valley) and ELA2565 (Viva Gold), as well as settling the acquisition of 70% of EL2306 - acquisition terms are presented in previous reports.

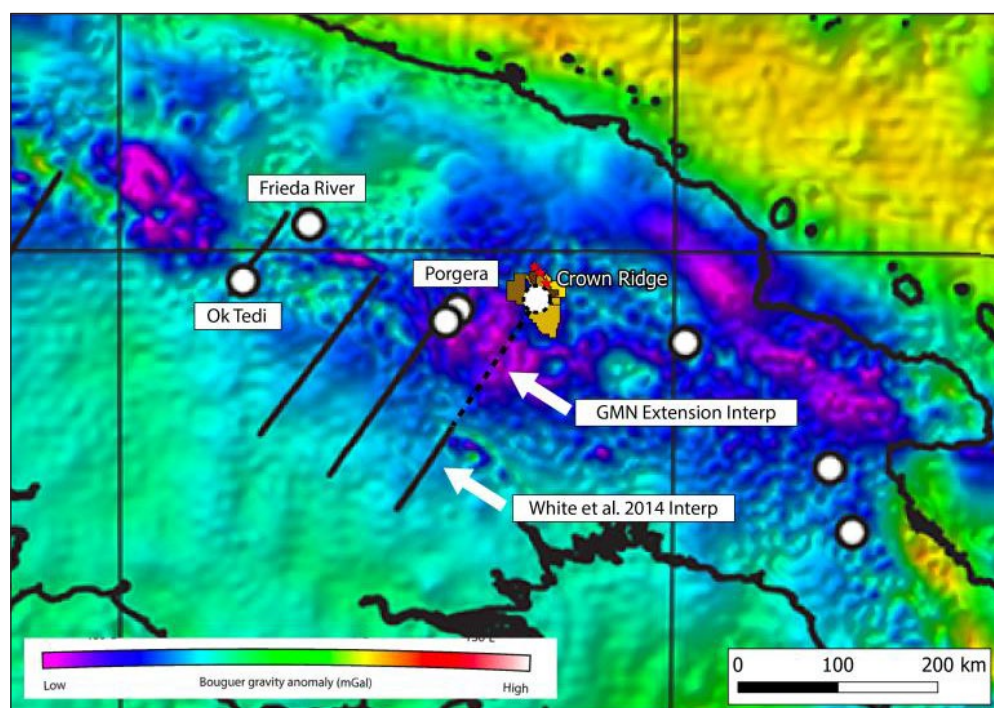


- ◆ Warden hearings have also been held for the renewal of all six granted ELs, with the Company reporting that no objections were lodged by the local communities.

## GEOLOGY AND PREVIOUS WORK BY GOLD MOUNTAIN

- ◆ As discussed more fully in our initiation and first update reports, work by Gold Mountain has included airborne and ground geophysics, reconnaissance geological mapping, geochemical sampling and interpretations of the results of the field programmes – this initially identified two key prospects, Crown Ridge and Sak Creek, with large parts of the tenements yet to be explored.
- ◆ A significant amount of the earlier work was concentrated at Crown Ridge, with this including bulk and pit sampling, with the aim of delineating a palaeo-placer resource suitable for shallow mining.
- ◆ Units in the area include intrusives of the 17 Ma to 3 Ma Maramuni event, a key mineralising phase of igneous activity in PNG, which is largely responsible for the arc-related mineralisation in the country; major deposits related to this event include Porgera (~28Moz Au), Mt Kare (2.1Moz Au, 18Moz Ag) and Wafi/Golpu (9Mt Cu, 20Moz Au) amongst others.
- ◆ Wabag lies on a major NE trending lineament one of a number of parallel structures that appear to be important in localising mineralising - parallel structures are coincident with the world class deposits at Frieda River, Ok Tedi and Porgera (Figure 3).

**Figure 3: Porphyry prospect locations**



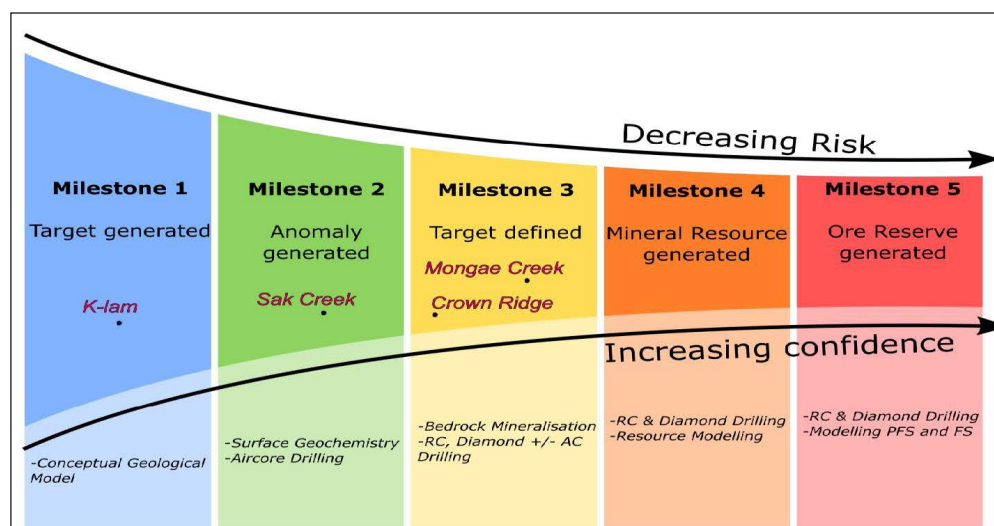
Source: Gold Mountain

- ◆ In addition to the palaeo-placers in the interpreted caldera structure at Crown Ridge the tenements are considered prospective for the full gamut of arc-related mineralisation styles, including epithermal gold, porphyry copper-gold, diatreme breccia hosted gold and skarn copper-gold amongst others - the porphyry prospectivity has been confirmed by the discovery of the Mongae Creek, Sak Creek and K-Lam prospects.

## CURRENT EXPLORATION ACTIVITIES

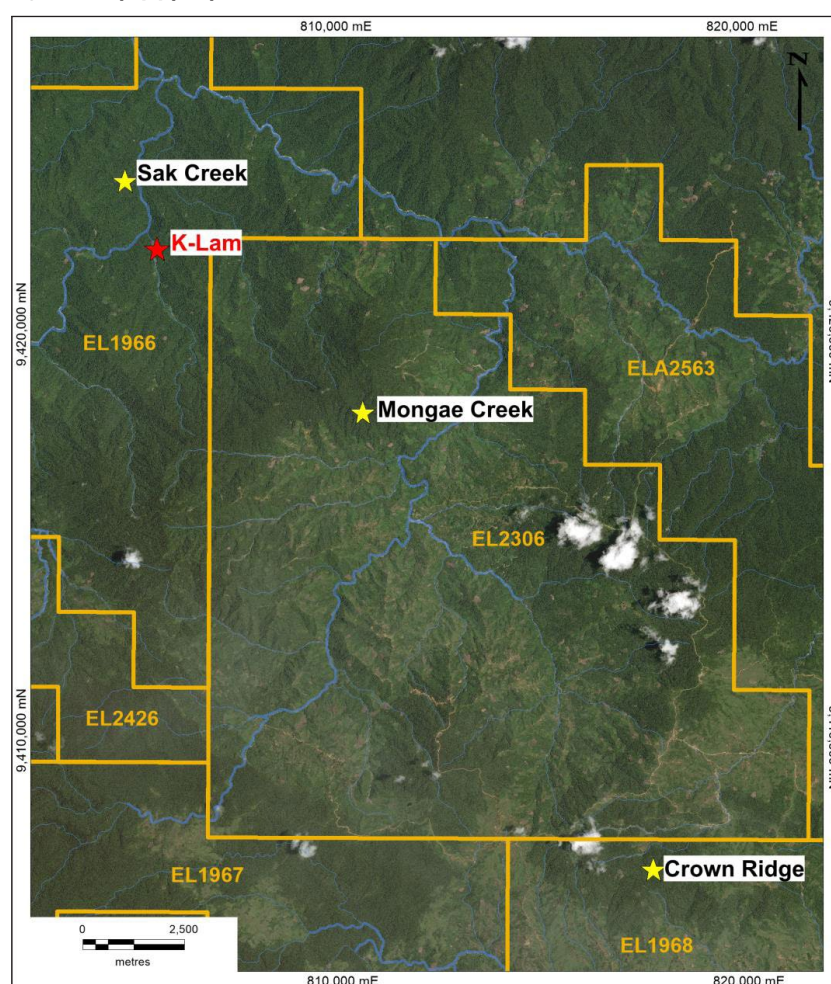
- ◆ Work by the Company subsequent to our September 2017 report was initially concentrated on Crown Ridge, however as mentioned earlier the focus has changed following the discovery of Mongae Creek during reconnaissance mapping and sampling in the December quarter, 2017 - Mongae Creek is located ~10km NW of Crown Ridge, and just north of the detailed aeromagnetics surveying completed by the Company in 2017 (Figure 5).
- ◆ The work to date has resulted in a pipeline of prospects, as shown in Figure 4 and described more fully below.

Figure 4: Wabag prospect pipeline



Source: Gold Mountain

Figure 5: Porphyry prospect locations



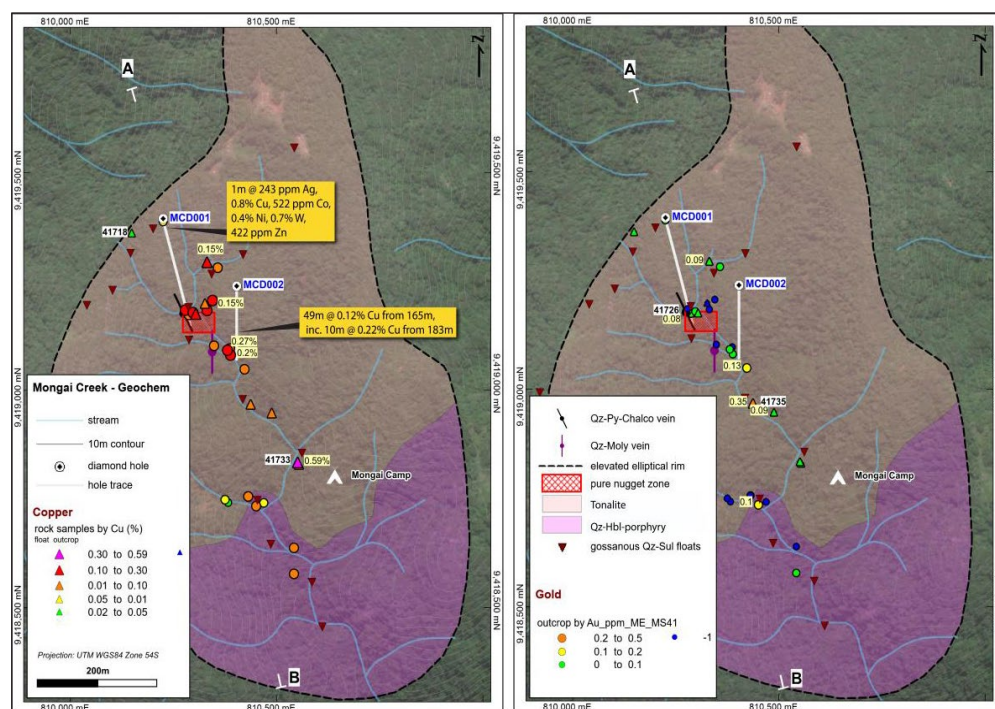
Source: Gold Mountain

### Mongae Creek Discovery

- ◆ Mongae Creek was discovered during reconnaissance mapping and sampling in the December quarter 2018, with this identifying outcropping altered diorite porphyry and hydrothermal breccias with associated copper sulphides and porphyry-style veining in a creek that is interpreted as the source of gold that is recovered in nearby artisanal alluvial operations.
- ◆ Subsequent work has identified prospective rocks and copper gold geochemical anomalism over an area of approximately 1.6 km by 1.2 km (Figure 6).



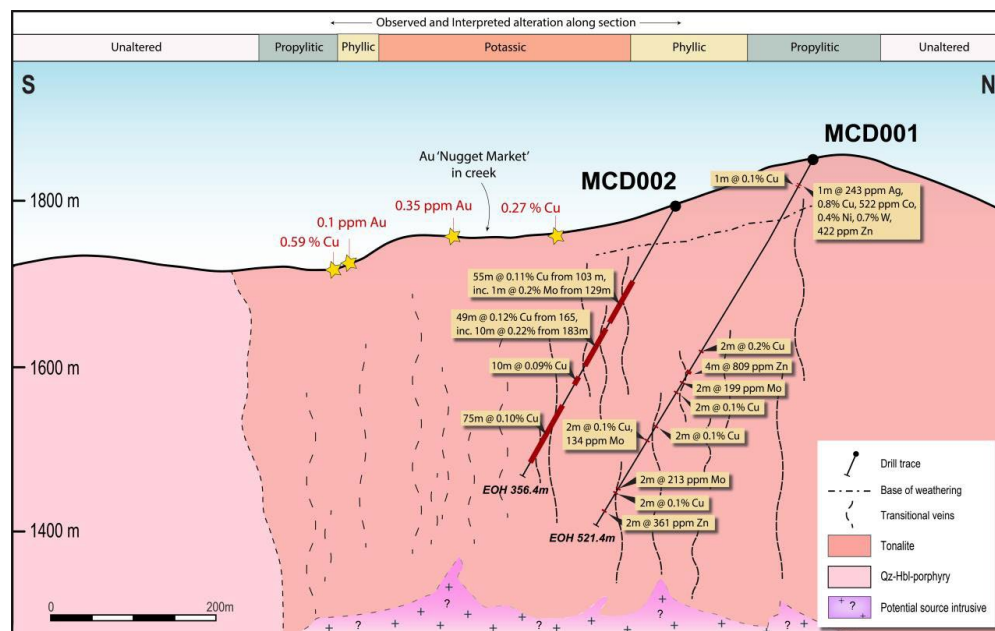
Figure 6: Mongae Creek geology, sampling and drilling



Source: Gold Mountain

- ◆ Rock chip and proximal float sampling has returned values of up to 0.6% Cu and 0.44% Au from gossanous and altered rocks; these are crushed by locals to recover gold.
- ◆ More recently, the Company has drilled two diamond holes for 877.8m (Figure 7), with both holes intersecting porphyry copper mineralisation.

Figure 7: Mongae Creek drill section



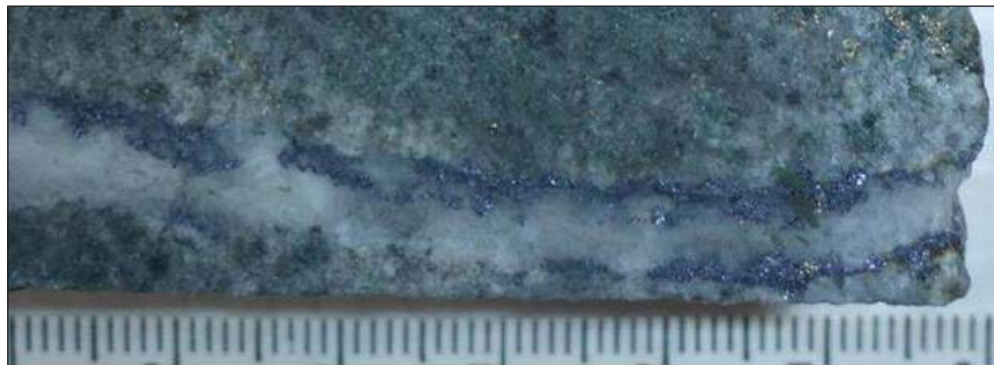
Source: Gold Mountain

- ◆ Both holes intersected porphyry style zoned alteration over their entire lengths, with this associated with anomalous copper intersections, with the best of these from hole MCD002, suggesting a vector towards the higher grade parts of the system.
- ◆ Intersections from MCD002 include:
  - 55m @ 0.11% Cu from 103m,
  - 49m @ 0.12% Cu from 165m, including 10m @ 0.22% Cu from 183m,
  - 10m @ 0.09% Cu from 228m; and,
  - 75m @ 0.10% Cu from 264m.



- ◆ The drilling has also intersected the main porphyry vein styles, including A- (Figure 8), B-, M- and D-type.
- ◆ The potential of this discovery cannot be understated - although the tenor of mineralisation of holes drilled to date is sub-economic, they provide a vector to higher grade mineralisation; porphyry systems can be very large and commonly the tenor of mineralisation is gradational from the margins to centre of the system.

**Figure 8: A-type chalcopyrite-pyrite-magnetite-quartz vein in altered diorite, hole MCD002**

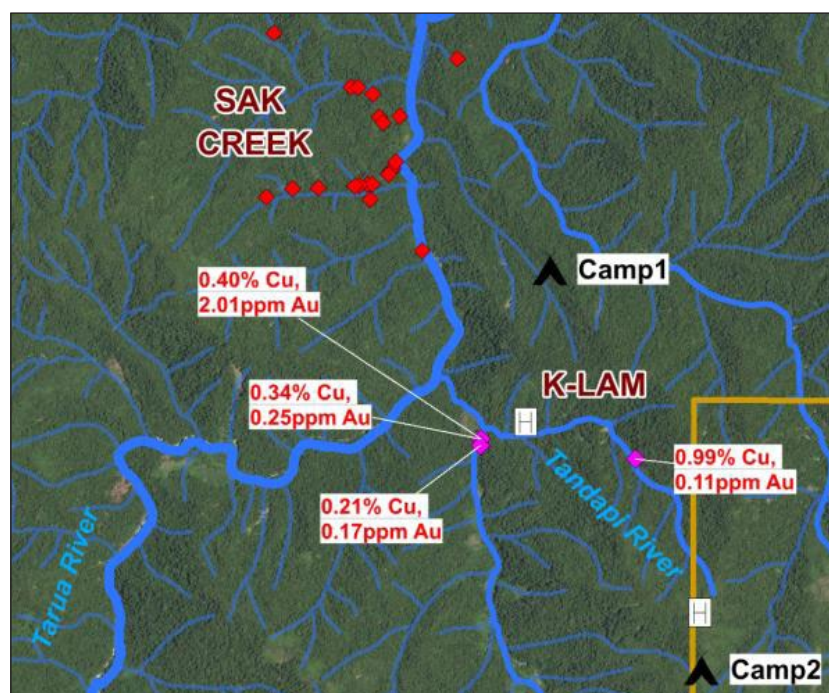


Source: Gold Mountain

### K-Lam Prospect

- ◆ The K-Lam prospect, located some 2km south of Sak Creek (Figure 9), was discovered in October 2018 during reconnaissance work following up rock chip samples collected by a local, which assayed at up to 0.99% Cu and 0.11g/t Au.
- ◆ Work to date (which has included one brief 2 hour visit) has identified a ~30m wide outcropping zone of sub-parallel quartz-sulphide veins containing chalcopyrite hosted in altered tonalite containing disseminated pyrite - this is open in all directions.

**Figure 9: K-Lam prospect showing sample locations**



Source: Gold Mountain

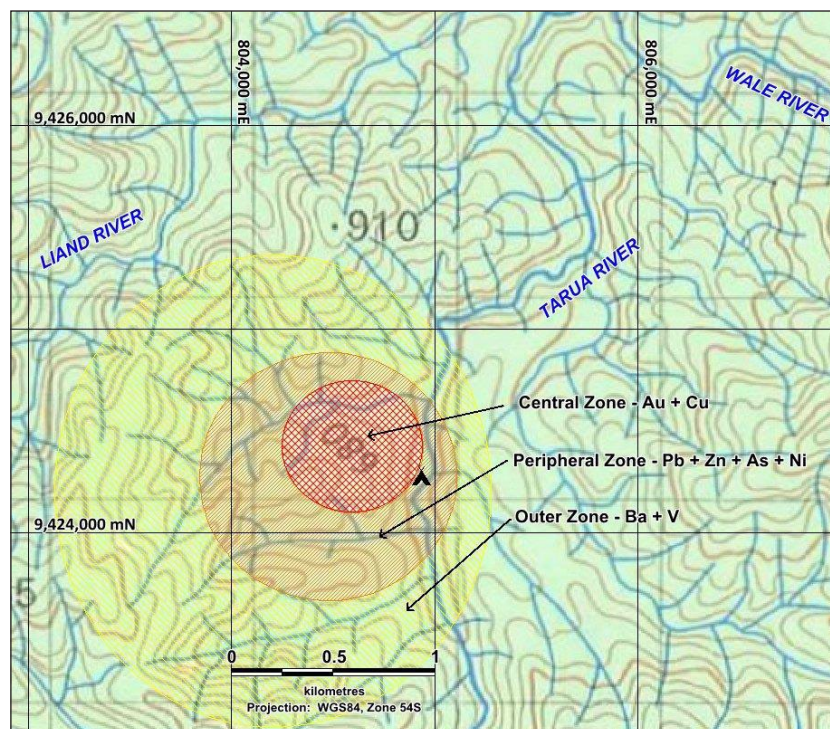
- ◆ The seven rock chips collected during the reconnaissance work returned assays of up to 0.39% Cu and 2.01g/t Au, with anomalous Ag, Pb, Zn and As, with these exhibiting characteristics of porphyry related mineralisation.

### Sak Creek Prospect

- ◆ No further work has been completed at Sak Creek, however this still remains a key porphyry target, with work to date highlighting geochemical anomalism with zoning typical as that for porphyry copper-gold systems (Figure 10).



Figure 10: Sak Creek showing geochemical zonation

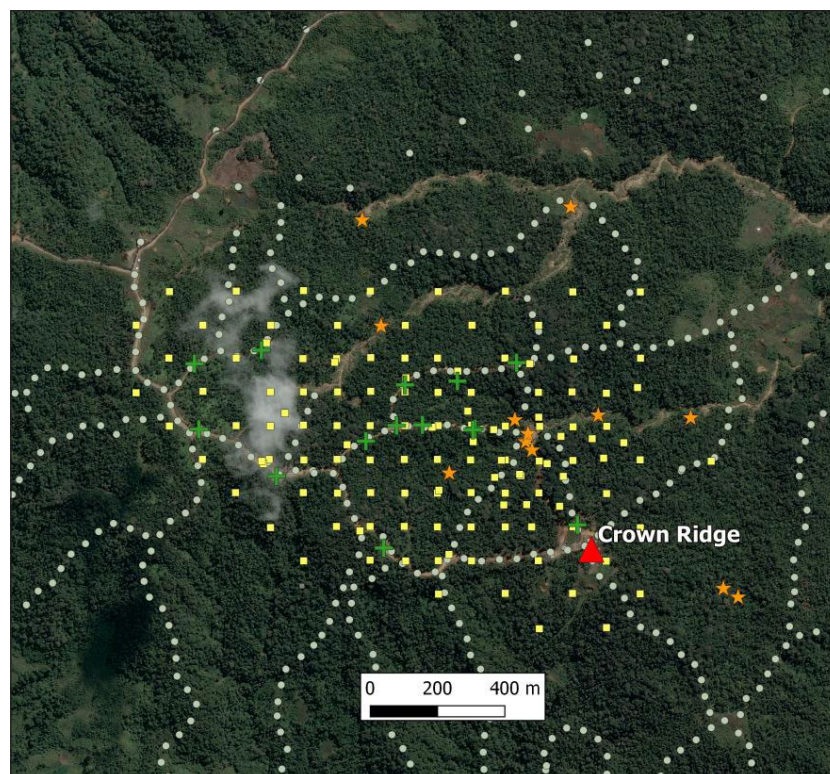


Source: Gold Mountain

### Crown Ridge Prospect

- ◆ Work at Crown Ridge has included further test and bulk sample pitting and diamond drilling (completed in June 2018), with the drilling including 19 diamond holes for 3,761.8m - hole locations (Figure 11)

Figure 11: Crown Ridge prospect showing test pit (yellow squares), drill hole (orange stars) and soil sample (white points) locations



Source: Gold Mountain

- ◆ Surface sampling has identified coarse, crystalline and dendritic gold hosted in quartz near the headwaters of the creeks draining the prospect area - the angular nature of some of these samples indicates that they may be close to their hard rock source, which is likely to be epithermal in style as indicated by the open space fill quartz textures (Figure 12).

**Figure 12: Gold in quartz specimen, Crown Ridge**

Source: Gold Mountain

- ◆ The drilling was designed to elucidate the local stratigraphy and target interpreted hard rock mineralisation - three holes were sampled and generally returned assays of <0.10g/t Au, however with a best intercept of 1m @ 0.66g/t Au from 77m in hole CRD001.
- ◆ The drilling also identified hydrothermal alteration in the shallow palaeo-placer material.

## CORPORATE

- ◆ In late 2017 the Company completed a placement that raised A\$6.647 million at A\$0.10/ share; this was followed by A\$2,064 million being received from the exercise of A\$0.055 options.
- ◆ The Company has also expanded and strengthened the exploration team, with the engagement of Rene Sterk (the MD of RSC Global Pty Ltd) and Geological Consultant Michael Leu.

## PLANNED ACTIVITIES

- ◆ The Company has a staged, comprehensive exploration programme planned over all prospects over the next two years, with an overall planned budget of A\$15 million.
- ◆ This will result in steady news flow over the period.

### Stage 1 - A\$2 million, November 2018 to April 2019

- ◆ Soil sampling, mapping, petrology and geochemistry at Mongae, Crown Ridge, Sak Creek and possibly K-Lam - this will include infill soils where necessary; and,
- ◆ Initial trenching targeting areas of anomalism delineated by the soil geochemistry.

### Stage 2 - A\$3 million, April 2019 to November 2019

- ◆ Estimated 5,000m to 6,000m with targeting based on the results of the soil sampling and trenching - it is expected that this will cover two or three drillholes at each of the main targets.

### Stage 3 - A\$10 million, December 2019 to December 2020

- ◆ This will be focussed on a resource drill out of key targets identified by the Stage 2 drilling; also, dependent upon the results of Stage 2 this may be accelerated.

## RISKS

- ◆ **Exploration:** This is the key risk at Wabag, given the early stage nature of the programmes and the targets being sought, however this has been mitigated by the exploration success to date - the key question here is whether the identified prospects will stack up as potentially economically viable systems - the presence of major operations and deposits in the region highlights significant potential for a major find at Wabag. Also, exploration for these styles can be difficult, and given the location and logistics (particularly the porphyry targets), time consuming and expensive, with the need for helicopter support.
- ◆ **Funding:** Immediate funding requirements relate to the A\$5 million required for the Stage 1 and Stage 2 exploration programmes - this should be partly funded from current cash, however additional funds will need to be sourced to enable these programmes to be completed. The funding of the Stage 3 programme (est A\$10 million) will partly depend upon the results of the Stage 2 drilling - positive results (indicating a major discovery) should lead to a significant uplift in share price and investor interest and as such make it relatively easy to source funds.
- ◆ **Permitting:** Keeping licence expenditure up to date on the ELs is vital – PNG is strict on compliance with the conditions of grant of ELs - the Company is currently renewing the ELs, with, as mentioned earlier, positive Warden's hearings being held.
- ◆ **Sovereign:** PNG rated at 40/91 in the 2017 Fraser Institute Survey, an improvement on the 59/104 in the 2016 survey. Although news reports highlight negative issues with the country, the Mining Law is well developed and the country has a strong history of mining. The critical issue with regards to the Project is developing and maintaining strong relationships with the local landowners, which by all accounts the Company has maintained.



# DISCLAIMER

## (a) Disclaimer

The information, reports, financial models, forecasts, strategies, audio broadcasts and other media (referred to as "Content" throughout this Legal Notice), provided on this web site has been prepared and issued by Altavista Research Pty Ltd trading as Independent Investment Research "IIR," Independent Investment Research Holdings Pty Ltd (ACN 155 226 074), as authorised to publish research under an Australian Financial Securities Licence (AFSL No 420170) which allows Independent Investment Research to offer financial service advice to retail and wholesale clients. Users of this web site should not act on any Content without first seeking professional advice. Whilst the Content contained on this web site has been prepared with all reasonable care from sources which we believe are reliable, no responsibility or liability is accepted by Independent Investment Research, for any errors or omissions or misstatements however caused. Any opinions, forecasts or recommendations reflect our judgement and assumptions at the date of publication or broadcast and may change without notice. Content on this web site is not and should not be construed as an offer to sell or the solicitation of an offer to purchase or subscribe for any investment. We are not aware that any user intends to rely on the Content provided or of the manner in which a user intends to use it. In preparing our Content it is not possible to take into consideration the investment objectives, financial situation or particular needs of any individual user.

Access by any user to this website does not create a client relationship between Independent Investment Research and the user. Users seeking to invest must obtain individual financial advice to determine whether recommendations are appropriate to their investment objectives, personal financial situation or particular needs, before acting on any recommendations. Any Content is not for public circulation or reproduction, whether in whole or in part and is not to be disclosed to any person other than the intended user, without the prior written consent of Independent Investment Research.

## (b) Disclosure of Interest

### General

Independent Investment Research, its officers, employees, consultants and its related bodies corporate have not and will not receive, whether directly or indirectly: any commission; fee; benefit; or advantage, whether pecuniary or otherwise, in connection with making any recommendation contained on this web site. Independent Investment Research, discloses that from time to time, it or its officers, employees and its related bodies corporate: may have an interest in the securities, directly or indirectly, which are the subject of these recommendations; may buy or sell securities in the companies mentioned in the Content; may effect transactions which may not be consistent with the recommendations in the Content; may have directorships in the companies mentioned in the Content; and/or perform paid services for the companies that are the subject of such recommendations.

However, under no circumstances, has Independent Investment Research been influenced, either directly or indirectly, in making any recommendations contained on this web site.

### Corporate Research

Independent Investment Research has or may have, received a fee either directly by a company itself or by a third party, to provide coverage and/or corporate research (the "Fee"). Where a Fee has been received, Independent Investment Research does not publish:

Buy / Hold / Sell recommendations for the security or managed investment schemes.

## (c) Copyright Protection

All Content at this web site is protected by copyright. Apart from any use permitted under the Copyright Act (Cth) 1968, you must not copy, frame, modify, transmit or distribute the material at this web site, without seeking the prior written consent of the copyright owner. Content on this web site is owned by the business Independent Investment Research. Users are prohibited from copying, distributing, transmitting, displaying, publishing, selling, licensing, creating derivative works or using any content on the web site for commercial or public purposes

Copyright 2010 Independent Investment Research. All rights reserved.

## (d) Trade Marks

The trade marks and logos displayed on this web site belong to Independent Investment Research or other parties. Such trade marks include registered trade marks and trade marks pending registration. Users are prohibited from using any of these trade marks, without seeking the prior written consent of IIR or such third party, which may own the trade mark content on this web site.

## (e) Limitation of Liability

To the fullest extent permitted by the law, Independent Investment Research and any of its officers, employees, agents, consultants or related bodies corporate disclaim any liability, whether based in contract, tort, strict liability or otherwise, for any direct, indirect, incidental, consequential or special damages arising out of or in any way connected with the use of any Content made available on this web site by any person or entity.

## (f) No Warranties

Independent Investment Research does not make any claims, promises, guarantees, representations or warranties regarding the accuracy, completeness or fitness for purpose of the Content made available on this web site. All information on this web site is provided to you on an as is basis, without warranty of any kind either express or implied. To the extent that research can be provided by third parties, Independent Investment Research makes no warranty or representation as to the accuracy or completeness of such information displayed on this site, and accepts no liability for errors or omissions arising from such third party information. To the fullest extent permitted by law, under no circumstances will Independent Investment Research be liable for any loss or damage caused by users reliance upon information obtained through this web site. It is the responsibility of the user to evaluate the accuracy, completeness or usefulness of any information, opinion, general advice or other content made available through this web site. Furthermore, Independent Investment Research does not warrant or represent that this web site is error free or free from viruses or defects. A user must do all that is necessary (including using virus checking software) to satisfy itself that accessing this website will not adversely affect its system.

For further information, please contact IIR at: [client.services@independentresearch.com.au](mailto:client.services@independentresearch.com.au)



**Independent Investment Research (Aust.) Pty Limited**

**SYDNEY OFFICE**

Level 1, 350 George Street  
Sydney NSW 2000  
Phone: +61 2 8001 6693  
Main Fax: +61 2 8072 2170  
ABN 11 152 172 079

**MELBOURNE OFFICE**

Level 7, 20–22 Albert Road  
South Melbourne VIC 3205  
Phone: +61 3 8678 1766  
Main Fax: +61 3 8678 1826

**HONG KONG OFFICE**

1303 COFCO Tower  
262 Gloucester Road  
Causeway Bay, Hong Kong

**DENVER OFFICE**

200 Quebec Street  
300-111, Denver Colorado USA  
Phone: +1 161 412 444 724

**MAILING ADDRESS**

PO Box H297 Australia Square  
NSW 1215